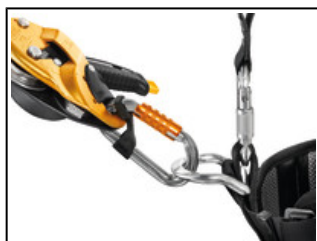


Universe	Professional
Type	Verticality
Category	Connectors
Subcategory	Aluminium carabiners

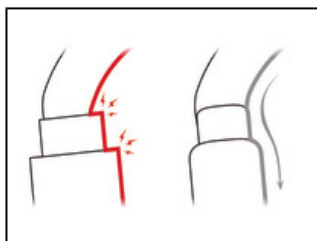


Am'D

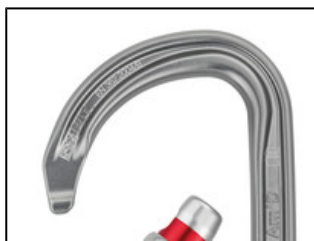
The Am'D lightweight asymmetrical carabiner is made of aluminum. It has a D shape particularly suited for connection to diverse equipment such as descenders or positioning lanyards. Its fluid interior design and Keylock system facilitate handling. The Am'D carabiner is available in three locking systems: automatic TRIACT-LOCK or BALL-LOCK system, or the manual SCREW-LOCK system. Am'D may be used with a CAPTIV positioning bar to favor loading of the carabiner along the major axis, to limit the risk of it flipping and to keep it integrated with the device.



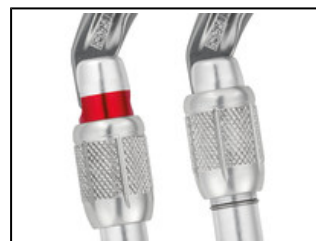
The Am'D carabiner has an asymmetric D shape that is ideal for attaching equipment such as descenders or positioning lanyards. Usage of the CAPTIV positioning bar favors loading of the carabiner along the major axis, limits flipping and keeps it attached to the device or lanyard.



Fluid interior design of Am'D carabiners limits the risk of having a catch point and facilitates rotation of the carabiner.



The Am'D has an H cross-section that ensures an optimal strength/weight ratio and protects the markings from abrasion.



To facilitate equipment checks, SCREW-LOCK manual locking carabiners have a red band that is visible only when the carabiner is not locked.

Short Description Lightweight asymmetrical carabiner

Selling Points

- D shape is particularly suited for connection to equipment such as descenders or positioning lanyards
- Aluminum carabiner whose light weight reduces the weight of equipment the worker at height needs to carry
- May be used with a CAPTIV positioning bar to favor loading of the carabiner along the major axis, to limit the risk of it flipping and to keep it integrated with the device
- Easier handling:
 - fluid interior design limits the risk of having a catch point and facilitates rotation of the carabiner
 - Keylock system to avoid any involuntary snagging of the carabiner
- H cross-section:
 - ensures an improved strength-to-weight ratio
 - protects markings from abrasion
- Available in three different locking systems:
 - TRIACT-LOCK: automatic locking with triple-action gate opening
 - BALL-LOCK: automatic locking with triple-action gate opening, with lock indicator
 - SCREW-LOCK: the manual screw-lock with red band provides a visual warning when the carabiner is unlocked
- Also available in black (TRIACT-LOCK and SCREW-LOCK)

Specification

- Material(s): aluminum
 - Certification(s): CE EN 362, EAC, NFPA 1983 Technical Use
-

Specifications by reference

Reference(s)	M34A TL	M34A BL	M34A SL	M34A TLN
				
Weight	75 g	75 g	70 g	75 g
Locking system	TRIACT-LOCK	BALL-LOCK	SCREW-LOCK	TRIACT-LOCK
Color(s)	gray	gray	gray	black
Major axis strength	27 kN	27 kN	27 kN	27 kN
Minor axis strength	8 kN	8 kN	8 kN	8 kN
Open gate strength	7 kN	7 kN	7 kN	7 kN
Gate opening	24 mm	25 mm	25 mm	24 mm
Made in	FR	FR	FR	FR
Guarantee	3 years	3 years	3 years	3 years
Packing	1	1	1	1
Case quantity	20	20	20	20
EAN	3342540102453	3342540102422	3342540102477	3342540102446

Reference(s)	M34A SLN
	
Weight	70 g
Locking system	SCREW-LOCK
Color(s)	black
Major axis strength	27 kN
Minor axis strength	8 kN
Open gate strength	7 kN
Gate opening	25 mm
Made in	FR
Guarantee	3 years
Packing	1
Case quantity	20
EAN	3342540102460

Accessory(ies) CAPTIV

Related product(s) I'D® S
RIG
GRILLON