

PowerCap[®] Active[™] UNIVERSAL CHARGER

TECHNICAL
SPECIFICATION

UNIVERSAL CHARGER FOR THE POWERCAP[®] ACTIVE[™] POWERED RESPIRATOR INCLUDING BRITISH, EUROPEAN, AMERICAN AND AUSTRALIAN CONNECTION POINTS

RESPIRATORY PROTECTION

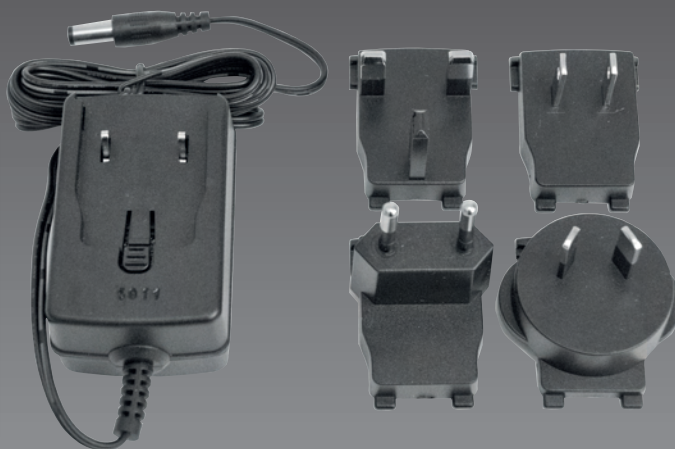
CHARGER INFORMATION

Input: AC100-240V 50/60Hz

Output: DC4.2V 1000mA

There are 4 attachments: British, European, American and Australian

led indicator light



CHARGER DIMENSIONS

DC cable: 1.5M

DC plug: 2.5*5.5*12mm

POWERCAP[®]
Active[™]



BATTERY INFORMATION

1800mAh Lithium Ion