



PRODUCT NUMBER: 6244416  
**BACOU TXL REPORTER S3 SRC**

Overview	<p><b>Reference Number</b> 6244416</p> <p><b>Product Type</b> Footwear</p> <p><b>Range</b> Triaxe</p> <p><b>Line</b> Urban</p> <p><b>Brand</b> Sperian</p> <p><b>Brand formerly known as</b> BACOU</p> <p><b>Industry</b></p> <p>• Logistics • Industry</p> <p><b>Product Use</b> Safety footwear for professional use</p>
----------	--



## Features & Benefits

### Feature

200 J Freelimium TM non metallic toe cap Non magnetic Chemically neutral Ultra light: 20% lighter than a standard composite toe-cap Ultra thin: 30% thinner than a standard composite toe-cap

### Benefit

Inalterable Excellent thermal insulator Imperceptible to wearers

### Feature

Flexium TM anti-puncture midsole Non-metallic, made with high tenacity textile fibres Covers 100% of the plantar surface

### Benefit

The midsole is light and flexible No constraints for the wearer when flexing the foot Antistatic and comfortable

### Feature

Insole Ergonomic and antistatic Anti-bacteria treatment

### Benefit

Provides optimal comfort and hygiene

## Technical Description

### Sizes

38-47

### Table Size

Table Size

### Midsole

FLEXIUM™ composite puncture resistant mid-sole: ultra flexible and light

### Upper

Water resistant oiled full grain leather upper Padded and ergonomic collar Leather lining

### Toe Cap

200 J FREELIUM™ Toe cap : Ultra light (50% lighter than a steel toe cap) Non metallic Thermally insulating Inalterable

### Insole

Full, ergonomical insole. Antistatic and antibacterial. Removable and changeable for an optimal comfort

### Outsole

TRIAXE™ Urban Sole Dual density polyurethane = PU 2D TRIAXE : SHOCK ABSORBENT,STABILITY,FLEXION Adherence coefficient : SRC, according to EN ISO 20345 : 2004/Am.1 : 2007 Density comfort layer : 0,5, with optimal comfort. Outsole density : 1 Shock absorption capacity > 20 joules. Very good abrasion resistance : Volume loss < 50 mm3 (under a weight of 0,5 kg) High resistance to hydrocarbures : Volum variation (test of 22 hours) \* oil ASTM N°1 swelling < 0,5 % \* isooctane-toluène(70/30) swelling < 4% Heat resistance :satisfactory until 120° C. Resistance to current chemicals: limited to low concentrations. High stretching resistance (up to breaking point) : 650 %. Good resistance to repeated flexion > 60.000 (test carried out with MATTIA flexometer)



## Certifications

### E.C. Declaration of Conformity


#### EC Category PPE

2

#### Quality Assurance

ISO 9001 / 2008

#### EC Attestation

 EC Attestation

#### EC Attestation Number

0075/826/161/11/07/0416 ext 02/07/08

## Photos & Images

We're sorry, there are no images available at this time.

## Maintenance

### Life Cycle

If the footwear is supplied with a part of, or the whole sole unit made of polyurethane: We advise that the footwear should be used in the limit of 3 years following the manufacturing date, which figures on the footwear.

After this time limit, certain factors such as : exposure to sunlight, hydrometry, temperature changes, could cause a modification in the structure of the material, which would no longer maintain the same performance levels with regards to the requirements defined in the European Directive 89.686 CEE.

If the footwear is supplied with a sole unit made from a material other than polyurethane: We advise that the footwear should be used in the limit of 5 years following the manufacturing date, which figures on the footwear

### Storage Information

Footwear should be stored in their original packaging, kept in a controlled stock area, not subject to rapid changes in temperature or humidity levels.

### Care Instructions

After use leave your footwear to dry in an aired place away from heat

Remove any excess dust or dirt with a brush. Remove any marks using a damp cloth and soap if necessary.

Finally polish any grain or pigmented leathers using a commercially available shoe care product.

## Parts & Accessories

### Accessories

BAC'RUN Insole

Size : 38-47

Reference : 60 003 21



**Accessories File**  
Accessories File

---

The Honeywell logo is displayed in a bold, red, sans-serif font.

[View other region sites](#)  
© 2011 Honeywell International Inc.





En exécution de la Directive 89/686/CEE du 21 décembre 1989 concernant le rapprochement des législations des états membres relatives aux équipements de protection individuelle et des décrets n° 92-765, 766 et 768 du 29 juillet 1992 portant transposition de cette directive en droit français,  
In application of the Directive ref. 89/686/EEC of 21st December 1989, concerning the alignment of member state legislation relating to personal protective equipment and the decrees n° 92-765, 766 and 768 of the 29th July 1992 concerning the transposition of the Directive into French law,

### CTC - Centre Technique Cuir Chaussure Maroquinerie

habilité par arrêtés du ministère du travail, de l'emploi et de la formation professionnelle en date du 11 août 1992 et 24 décembre 1996,  
authorized by decrees of the Ministry of Work, Employment and Professional Training of 11 August 1992 and 24 december 1996,

identifié sous le numéro 0075, publié au JOCE, attribue :

identified by the number 0075, published in the Official Journal of the European Community, delivers :

#### L'EXTENSION D'ATTESTATION D'EXAMEN CE DE TYPE

CE type examination certificate n°

N° 0075/826/161/11/07/0416 - EXT 02/07/08

Au modèle d'équipement de protection individuelle suivant :

to the following model of personal protective equipment :

- **chaussure de sécurité à usage professionnel,**  
safety footwear for professional use,
- **référence et nom du modèle : BACOU TXL REPORTER S3 CI 6244416**  
reference and name
- **responsable de la mise sur le marché :**  
applicant of the CE type examination certificate

**SPERIAN PROTECTION FOOTWEAR VALENCE**

**30 AVENUE RENE SIMONET**

**BP 163**

**26906 VALENCE CEDEX 9**

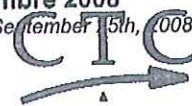
La description du modèle de chaussure de sécurité, les références des règles techniques vérifiées dans le cadre de l'examen CE de type ainsi que les marquages apposés sur les chaussures sont précisés en pages 2, 3, et 4 de cette attestation.

Description of the safety footwear model, reference of essential requirements or technical rules verified in the context of the CE type approval examination, information indicated on the product, are detailed on pages numbered 2, 3 and 4 of this CE type approval certificate.

Lyon, le 25 septembre 2008

Drawn up in Lyon, on September 25th, 2008

Etablie par : **Nathalie CIERKOSZ**  
Issued by :



**4, rue Hermann Frenkel  
69367 Lyon Cedex 07 - France**

NOTA : Toute modification apportée au matériel neuf, objet de la présente attestation d'examen CE de type doit être portée à la connaissance de l'organisme habilité en application de l'article R 233-62 du Code du Travail ainsi que toute modification des informations contenues dans le dossier technique sur la base duquel l'attestation CE de type a été délivrée (changement de lieu, changement de raison sociale du fabricant, retrait de certificat d'assurance qualité...).

Any modification to new items of the personal protective equipment object of this CE type examination certificate or any modification of the information contained in the manufacturer technical file which served for the deliverance of the CE type approval certificate (change of adress, change of company status) should be brought to the attention of the notified body in accordance with law n° R. 233-62 of the French Code of Work

Cette attestation comporte 4 pages numérotées 1/4, 2/4, 3/4, 4/4

This certificate contains 4 pages numbered in the following way 1/4, 2/4, 3/4, 4/4





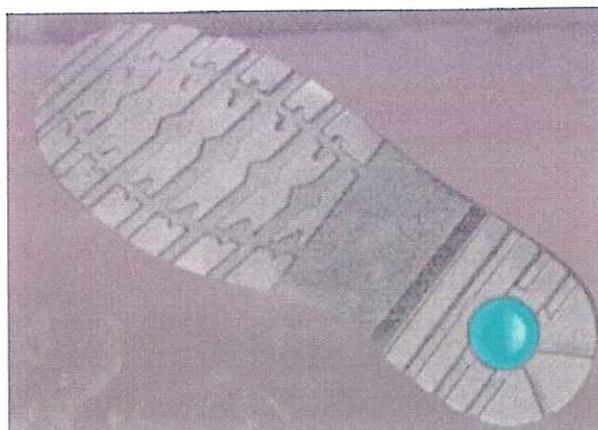
# 1. DESCRIPTION DE LA CHAUSSURE DE SECURITE

*Description of the safety footwear*

suivant le dossier technique du modèle **BACOU TXL REPORTER S3 CI 6244416**  
du 01/04/2008.

*according to the technical file of the model BACOU TXL REPORTER S3 CI 6244416 dated April 04th, 2008.*

- chaussure de sécurité à usage professionnel,  
*safety footwear for professional use*
- conçue suivant la norme **EN ISO 20345:2004 / A1 : 2007**  
*designed in accordance to the standard EN ISO 20345 : 2004 / A1 : 2007*
- style : A : chaussure basse - classification I (cuir et autres matières)  
*design : A : low shoe - classification I ( leather and other materials)*
- gamme de pointures : du 35 au 47  
*range of sizes : from 35 to 47*
- mode de fabrication : injecté  
*construction : injected*
- la description visuelle du modèle est reprise ci-dessous :  
*sketches , and / or photographs of the model are reported below :*







## **2. NIVEAUX DE PROTECTION OFFERTS**

*Levels and classes of protection*

La conformité aux exigences essentielles de la directive 89/686/CEE a été vérifiée en utilisant les règles techniques suivantes :

*Compliance with the essential requirements of the Directive 89/686/EEC has been verified by using following technical rules :*

- Norme européenne harmonisée **EN ISO 20344:2004 / A1:2007 "Equipement de protection individuelle – méthodes d'essai pour les chaussures"**,  
*European standard EN ISO 20344:2004/A1:2007, "Personal protective equipment – test methods for footwear"*
- Norme européenne harmonisée **EN ISO 20345:2004 / A1:2007 "Equipement de protection individuelle – chaussures de sécurité"**,  
*European standard EN ISO 20345:2004/A1:2007 "Personal protective equipment – safety footwear"*
- Directive **2002/61/CE : la conformité a été vérifiée sur la base de rapports d'essais réalisés dans le cadre de l'examen CE de type.**  
*Compliance with the the Directive 2002/61/CE has been verified on the basis of test reports performed as a part of the CE type examination.*

=====

**La chaussure de sécurité référence BACOU TXL REPORTER S3 CI 6244416, a été conçue pour satisfaire :**

*The safety footwear reference BACOU TXL REPORTER S3 CI 6244416 was designed, to meet the following requirements :*

1. **les exigences fondamentales spécifiées dans les tableaux 2 et 3 de la norme EN ISO 20345:2004.**  
*Basic requirements listed in the tables 2 and 3 of the european standard EN ISO 20345:2004*
2. **l'exigence de la norme EN ISO 20345 : 2004 / A1 : 2007 relative à la résistance au glissement sur carreaux céramiques recouverts d'une solution de Sodium Lauryl Sulfate et sur sol acier avec lubrifiant glycérol (SRC)**  
*Requirement of the standard EN ISO 20345:2004 / A1:2007 concerning the value of the coefficient of friction of ceramic tiles floor with detergent solution and steel floor with glycerol (SRC)*
3. **les exigences additionnelles, mentionnées ci-dessous, extraites du tableau 14 de la norme EN ISO 20345 : 2004 :**  
*Additional requirements, listed below, from table 14 of the european standard EN ISO 20345:2004 :*
  - résistance à la perforation,  
*Penetration resistance,*
  - arrière fermé,  
*closed seat region,*
  - chaussures antistatiques,  
*antistatic properties,*
  - capacité d'absorption d'énergie du talon,  
*energy absorption of seat region,*
  - résistance à la pénétration et absorption d'eau,  
*water penetration and water absorption,*
  - semelle à crampons,  
*Cleated outsole,*
  - isolation contre le froid.  
*Insulation against cold.*





**Les références des procès-verbaux des essais de vérification de la satisfaction des règles techniques applicables, par ce modèle de chaussures de sécurité, sont les suivantes :**

*References of reports containing the satisfactory results of the laboratory tests, performed in order to verify the levels and classes of protection of this safety footwear model, are given hereunder:*

CTC	0507-674/1	CTC	0609-847
CTC	0512-3501	CTC	0611-11287
CTC	0512-5255	CTC	0802-1825
CTC	0512-5501	CTC	0803-2793
CTC	0601-293	CTC	0804-4351
CTC	0601-363	CTC	0806-6709
CTC	0601-1013	CTC	0807-7627
CTC	0602-1031	CTC	82367.10.03
CTC	0603-2574	CTC	82933.10.03
CTC	0604-3143	CTC	83252.04.04
CTC	0604-3151	CTC	84550.12.03
CTC	0604-3629	CTC	86130.02.04
CTC	0604-3842	CTC	93809.09.04
CTC	0604-3876	ITC	412401295
CTC	0604-3898	ITC	412401274
CTC	0605-4725	ITC	412402031
CTC	0605-4726	INESCOP	R-05116742

### **3. MARQUAGES SUR LE PRODUIT**

*Marking on the product*

**Chaque pied de la chaussure de sécurité est marqué de manière visible, lisible et indélébile de la façon suivante :**

*Each foot of the safety footwear is clearly and permanently marked with as following:*

- **Marque d'identification : SPERIAN**  
*logo – commercial brand*
- **marquage C €**  
*C € marking*
- **Référence : 6244416**  
*reference*
- **pointure**  
*size*
- **Mois et année de fabrication**  
*month and year of manufacture*
- **Symboles normatifs : EN ISO 20345:2007 et S3 CI SRC**  
*standards symbols*





## E.C. Declaration of Conformity

**The manufacturer or its legal representative supplier in the European Community:**

Honeywell Safety Europe

**Declares that the Personal Protective Equipment described here after conforms to the provisions of the European Council Directive 89/686/CEE:**

Designation: BACOU TXL REPORTER S3 SRC

Reference: 6244416

Standard(s): EN ISO 20345:2007

**This PPE is the object of the below EC examination certificate n°:**

**Delivered by:**

CENTRE TECHNIQUE DU CUIR

4 rue Hermann Frenkel

69367

Lyon Cedex 07

Drawn up in Lyon, on the 29/03/2013

**By:** Ailsa LHOPITAL

**Division:** Footwear



ZI Paris Nord II 33, rue des Vanesses BP 50288 95958 Roissy CDG France

Tel: +33 (0) 49 90 79 79 Fax: +33 (0)1 49 90 79 80

[www.honeywellsafety.com](http://www.honeywellsafety.com)