



MANUAL OCCUPATIONS

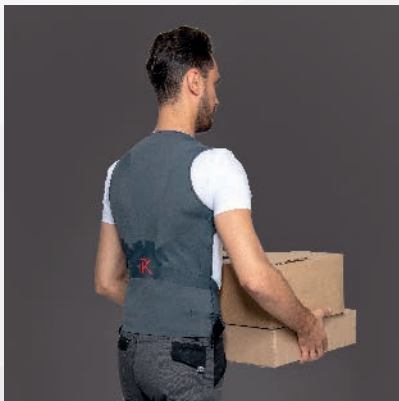
RK
PERCKO

FOR
PROFESSIONALS

LYNE PRO

BACK PROTECTION
JACKET

« ADOPT THE
CORRECT GESTURES
& **POSTURES** DURING
THE EFFORT. »



DEVELOPED IN FRANCE AND ONLY
MADE OF EUROPEAN MATERIALS



DEVELOPED WITH
HEALTH PROFESSIONALS



LABORATORY TESTED
TECHNOLOGY



GLOBAL INNOVATION
PRIZE LAUREATE

IT PROTECTS YOUR BACK BY ENCOURAGING YOU TO ADOPT THE RIGHT GESTURES AND THE RIGHT POSTURES **DURING AND BETWEEN YOUR MOVEMENTS**

HOW DOES LYNE PRO ACCOMPANY YOUR MOVEMENTS WITHOUT RESTRICTING THEM?



ENCOURAGES
THE OPENING
OF THE THORAX



REALIGN
YOUR
SPINE

- ✓ Lowers back pain
- ✓ Reduces the risk of injury *
- ✓ Reduces muscle fatigue

WHEN SHOULD YOU WEAR LYNE PRO?

All day long, Lyne PRO accompanies every manual activity and repetitive task that implies back solicitation.

HOW SHOULD YOU WEAR LYNE PRO?

Like a vest,

- You can put it on and take it out quickly and easily
- You should wear LYNE PRO always on a first layer of clothing (tee-shirt, shirt, sweater...)

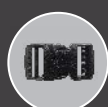


LUMBAR BELT OR LYNE PRO ?



A lumbar belt is a curative solution and should only be used during short periods of time or in the case of a pathology. It completely prevents you from making specific risky moves.
LYNE PRO encourages and stimulates you to conserve a good posture at all time.
It does not keep you from doing any moves and does not have any contraindication.

TECHNICAL CHARACTERISTICS

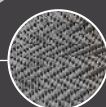


38mm
double Adjust
Side Release
acetal buckle

Patented system of
tensors PERCKO



Belt Clasps to keep
in place LYNE PRO
(if needed)



High resistance
flexible strap



Discrete and light equipment
weight 190g



Resisting and highly
breathable fabrics



XS à 2XL



S à 3XL

American sizes system

Customs code 61092000

78% Polyamide, 22% Elastane



MADE IN TUNISIA