

## TECHNICAL SPECIFICATION

**PRODUCT CODE: ANX100-130-000**

## OFFERS GENERAL ROBUSTNESS AGAINST PARTICLES AT 12MS

## HEAD PROTECTION

## ACCESSORIES

## INSTRUCTIONS FOR USE

In use ensure that the faceshield fits comfortably and securely on the head

Ensure that a suitable visor has been fitted with the protective film removed from it

Ensure the visor is in place before entering the hazard area

## DIMENSIONS OF VISOR

Weight: 133g (Approx.)

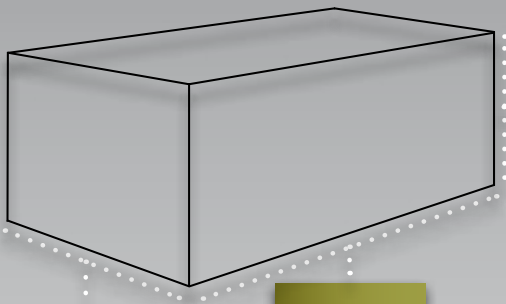
Thickness: 1.0 mm

Length: 200mm

## DIMENSIONS OF OUTER PACKAGING

Quantity: 50

Weight: 7.3kg (Approx.)



**HEIGHT:**  
290mm

**WIDTH:**  
359mm

**LENGTH:**  
422mm

## CLEANING & MAINTENANCE

The visor may be cleaned with soap and warm water and dried with a soft cloth

Do not clean with chemical or abrasive cleaners

The visor should be stored out of direct sunlight, away from chemicals and extremes of temperature

## VISOR PERFORMANCE

20cm Wire gauze Visor

Offers protection against particles at 12 ms

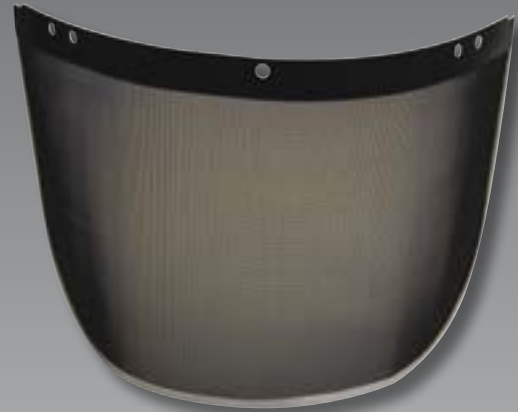
The optical qualities of the visor comply with the requirements of optical class 1 (highest)

Markings: EN1731 1.S

## CONFORMITY

Meets the requirements of EN 166 & EN 1731 1.S

EC Type Examination Certificate Number 85724, issued by BSI  
Product Certification



**VISOR:**  
Painted Steel Mesh

## LIMITATIONS OF USE

Protection will only be offered if the visor carrier and a visor are fitted correctly to a suitable Industrial Safety Helmet with the helmet attachment kit

If the visor becomes scratched or damaged it should be replaced, likewise if the visor is subjected to severe impact it should be replaced immediately

Do not apply paint, solvents, adhesives or self-adhesive labels, except in accordance with instructions from the manufacturer

The visor, when in contact with the skin may cause allergic reactions to susceptible individuals

If this occurs leave the hazard area, remove the eyeshield and seek medical advice

The visor is not suitable for use with chemicals – if you are unsure contact your supplier or JSP for help and advice