

MADONA ML

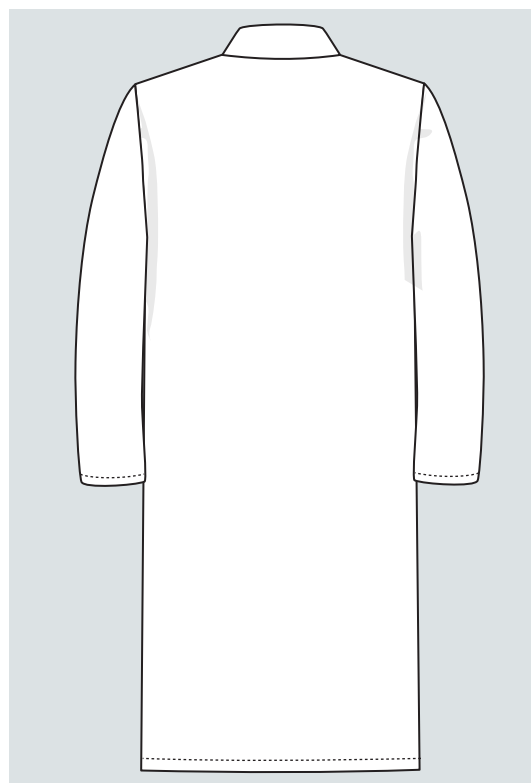
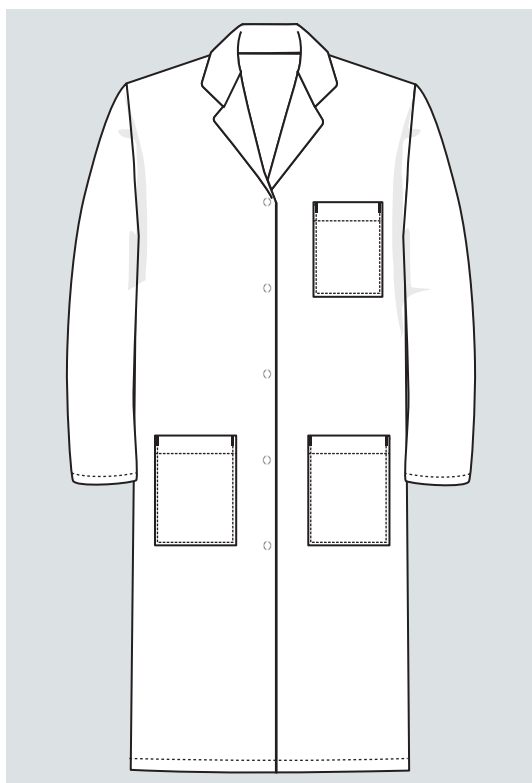


65% POLYESTER
35% COTON



FEMME

CATALOGUE
25/03/2024



Blouse femme Madona

Col tailleur

Manches longues

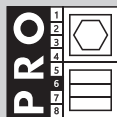
Fermeture milieu devant par 5 pressions inox 11mm

1 poche poitrine & 2 poches basses

Longueur dos : 105 cm

Taille 0 à Taille 6

65% polyester/ 35% coton 200 gr/m²



Bleu ciel

MADLP00010



Noir

MADLP00001



Vert nil

MADLP00040



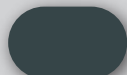
Rose pâle

MADLP00030



Lilas

MADLP00035



Gris nimbus

MADLP00059



Bleu roi

MADLP00021



Blanc

MADLP00000

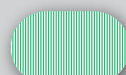


65% polyester/ 35% coton 160 gr/m²



Rayé bleu

MADLP00114



Rayé vert

MADLP00144

100% coton 200 gr/m²



Blanc

MADLP00200

